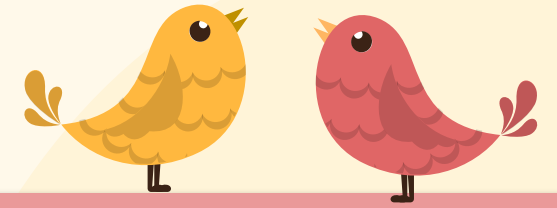


# Bird Project



# Tucson Bird Project



## Essential Question

How much human activity impacts the bird population densities in a given area?

We will utilize cameras to determine if there is a difference in the bird population during the day with activity or during the non school hours.

## Urban Area

the region surrounding a city.

## Rural

geographic areas that are typically located outside of cities and towns, and have a low population density and small settlements.

## Suburban

lower density areas that separate residential and commercial areas from one another.

## Wilderness

a place where humans have little to no impact on the earth and its natural inhabitants



Urban



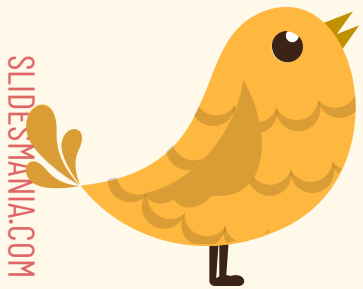
Wilderness



Suburban



Rural





# Get thinking...

What area do you think you will see more birds  
in and why?



# 01

Where do you think you will find the most birds, why?

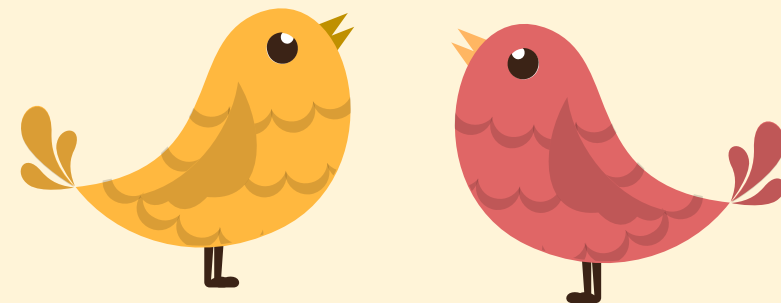
How might humans impact the birds in these areas?

# Did you know?

## Our Bird Population

Arizona has 47 birds on the watch list.

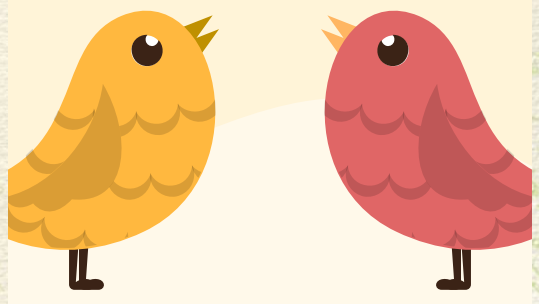
The placement of a bird on or off the WatchList is based on the assessment of four factors: population size, range size, threats, and population.





## Arizona Birds and their sounds.









Brown-crested Flycatcher

Cactus Wren

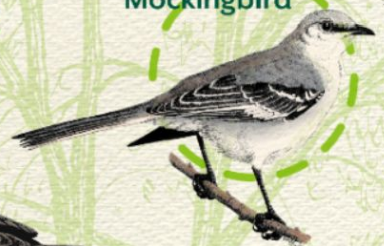


Greater Roadrunner



Ladder-backed Woodpecker

Northern Mockingbird



Pyrrhuloxia



Red-tailed Hawk

Turkey Vulture



Western Screech Owl



# In groups...

## Garden area...

Take images from the garden or green area and assess the types and amount of birds that visit that area.

## Green area...

Which group will find more birds?

## Jobs:

### Species counter/observer (2 people)

This person will look with binoculars and keep track of what the birds are doing and how many birds they see in the time outside. Make sure to jot down if the bird is eating, perching, cleaning their feathers or making bird noises.

### Bird sound listener (2 people)

This person will listen and write down the different sounds of the birds that they hear and how many different bird sounds they hear.

### Merlin monitor (2 people)

This job is keeping track of the Merlin app or the recording device to listen to the birds.

Should be 6 in each group. If you have less than that reduce the scribe and just have the observer/counter and listener write their own information down.



# What do we do with our data?



## **Create a graph or visual data to show.**

Create a way to present your data to classmates. Make it visually appealing and relevant to the project.



## **Create a way to present your findings and observations**

You can create a handwritten presentation or a visual presentation with Google slides.



## **Tell your classmates.**

How you think your group can solve the problem of human impact to provide a better environment for the birds.

# Closure

Name one thing you enjoyed about the bird project and one thing you would like to see improved.

