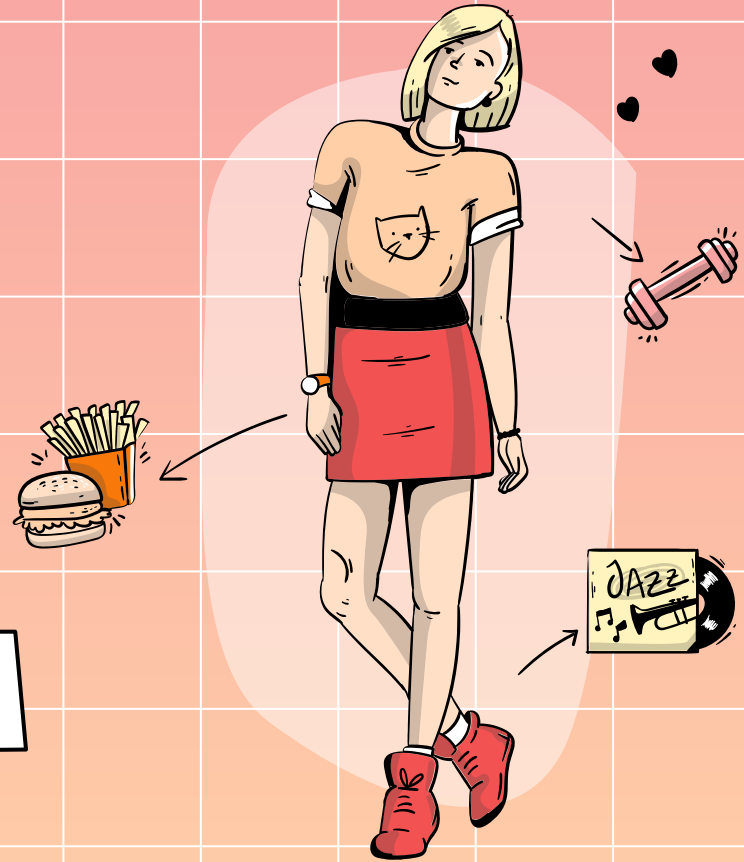


What is Dear Data?

It is a way to express everyday data and information into an artistic way.

Take things you do and turn them into data art.



History of Dear Data



Dear Data is a year-long, analog data drawing project by Giorgia Lupi and Stefanie Posavec, two award-winning information designers living on different sides of the Atlantic.

By collecting and hand drawing their personal data and sending it to each other in the form of postcards, they became friends.

week Twenty-four



Stefanie



NEW YORK
24 FEB 2015

from:
G. LOPI
BROOKLYN
NY - USA -

SEND TO:
STEFANIE POSAVEC
~~XXXXXXXXXXXXXXXXXXXX~~
LONDON ~~XXXXXXXXXXXX~~
- UK -
ENGLAND

SEND TO:
STEFANIE POSAVEC
~~XXXXXXXXXXXXXXXXXXXX~~
LONDON ~~XXXXXXXXXXXX~~
- UK -
ENGLAND

FROM:
S. POSAVEC
~~XXXXXXXXXXXXXXXXXXXX~~
~~XXXXXXXXXXXXXXXXXXXX~~,
LONDON
~~XXXXXXXXXXXXXXXXXXXX~~
UK



\$4.00

To: GEORGIA LUPI
~~BROOKLYN, NY~~
BROOKLYN, NY
USA

BY AIR MAIL
par avion

BROOKLYN, NY
USA
 BY AIR MAIL
par avion
 Royal Mail®

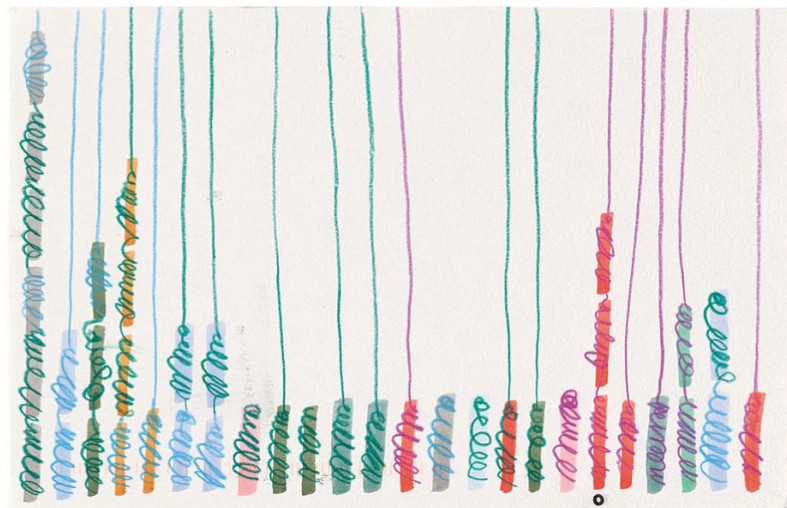


GEORGIA

Week Thirty-six

a week of indecision

Stefanie



66 DEAR DATA
WEEK 36: SHALL I?

HOW TO READ IT: Every element (●) represents a moment in the week where I was UNDECIDED about whether to do/think something or not.

ELEMENTS:

- ① solved almost immediately or stopped thinking of it
- ② postponed but solved
- ③ still open at the end of the week

did I talk to anybody about it?

dimension = level of anxiety that the UN-decision got me

Length = how long did it take to decide??

specific THING

Colors what was I undecided about?

work

- workout
- hang out?
- design
- organization
- how to write

personal

- am I wrong?
- am I terrible?
- should I change?
- physical
- eat more of xyz
- grabbing xyz
- what to wear?
- eat now or later?

organizational stuff

- postcard
- eyeb
- book
- website
- ask to make it warmer
- stay or leave
- when to eat/drink
- buy things
- take a phone
- other

FROM: S. POSAVEC
NEW YORK
19 MAY 2015
BROOKLYN
- NY - USA

SEND TO:
STEFANIE POSAVEC
LONDON
- UK -
ENGLAND

DEAR DATA- WEEK 36
A WEEK OF INDECISION

ABOUT THE DATA: I TRACKED MOMENTS OF INDECISION, WHICH ARE DEFINED AS MOMENTS WHERE I COULDN'T DECIDE/CHOOSE + IT MADE ME SLIGHTLY STRESSED (A HEALTHY WEIGHING-UP OF MY OPTIONS BEFORE DECIDING DOESN'T COUNT AS INDECISION)

HOW TO READ IT:

① DECISIONS ARE ORGANISED IN CHRONOLOGICAL ORDER BY 1ST MOMENT OF INDECISION.

② EACH DECISION IS REPRESENTED BY ONE VERTICAL LINE. ALL INSTANCES OF INDECISION RELATED TO THE DECISION ARE INDICATED BY NUMBER OF LINE SEGMENTS.

③ DECISION-MAKING PROCESS STARTS AT BOTTOM AND MOVES UPWARD AS DELIBERATIONS.

LINE TO TOP OF PAGE IF DECISION IS REACHED

LINE ENDS IF NO DECISION MADE

IF INDECISION

IF I REGRETTED MY DECISION

1st instance of indecision

2nd instance of indecision

3rd instance of indecision

TYPE OF INCIDENT

DIGITAL

REAL LIFE

TYPE OF INCIDENT

DIGITAL

REAL LIFE

FROM: S. POSAVEC
Mount Pleasant
Mail Code
LONDON
23-05-2015
03109712

TO: GEORGIA LUPI
BROOKLYN, NY
USA

BY AIR MAIL
par avion
Royal Mail®

Now it is your turn!



Some examples of data you could collect include:

What data do you want to focus on?

What habits do you want to keep track of?

How long do you do something?

How many times do your parents say no?

How many stop signs do you pass everyday?

How many animals did you see on your walk?

How many different plants did you see on your walk?

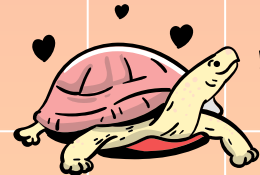
What is your peers' favorite shoe brand?

What is the most popular favorite color at your school?

How much time do you spend playing games versus??

How many times do you complain? To who?

How much gossip do you hear at school?



What I do

collect

Data

- Gather the data on a piece of paper.
- In a notebook
- In your journal



Draw the Data

What visual can you come up with to display your data. What matches the data you came up with.

collect

Data

- Use tally marks
- Write down the information
- Take a poll
- Ask friends/classmates

Make sure to have a key on the back



20%

Drawing

Make sure we know what each different design or picture means.



50%

Painting

Make sure the keys are on the back.

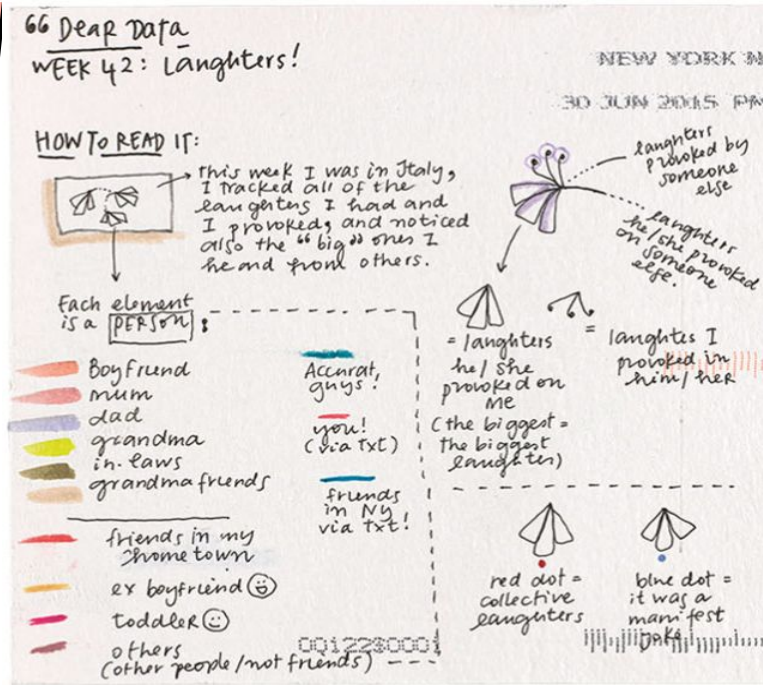


30%

Writing

Make sure they make sense and are easy to read.

My key



color

Make sure to include what each color means.

Make sure to include all of the colors you used and the meaning behind each item.

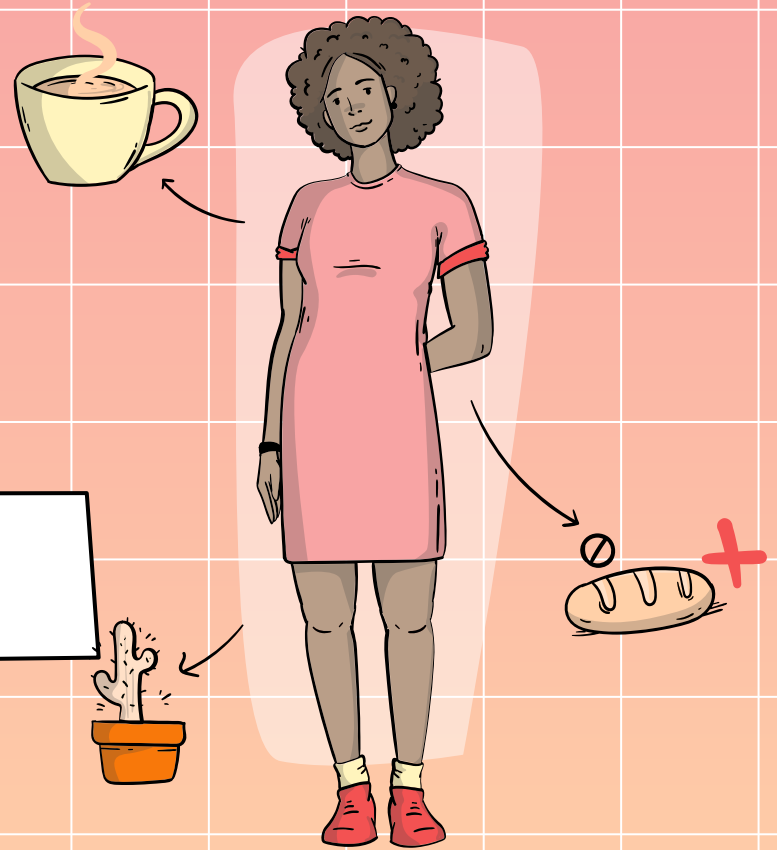
Design

Explain each part of your design and what it means.

Explain how we are to read your information.

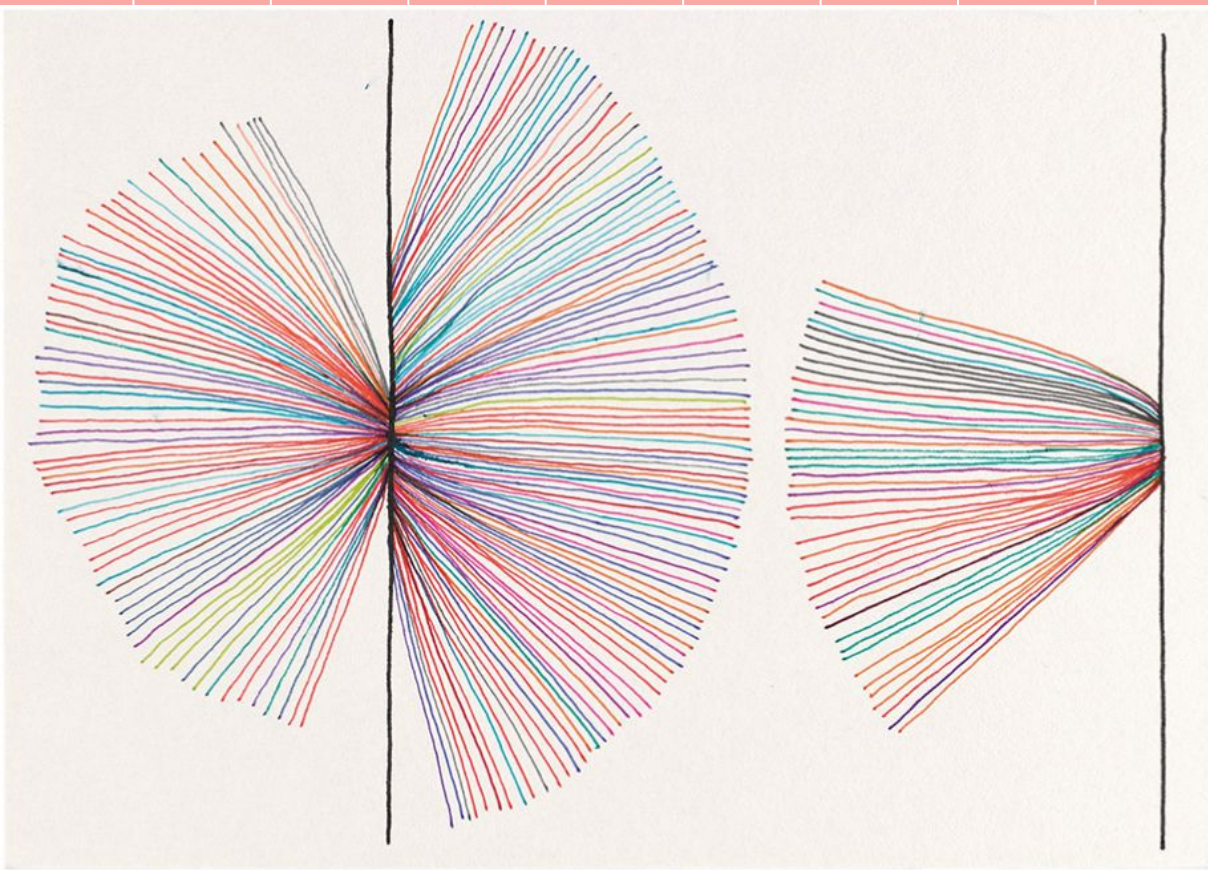
My work

Have a title for your
work



A closer

- ook...
- Make sure the front side does not give any hints or clues to what the data could be.
 - Try not to include any words in the front.
 - Only include color and a design.



The Back

Include a title

What does each part mean

Colors and what they mean. You can do this or this.

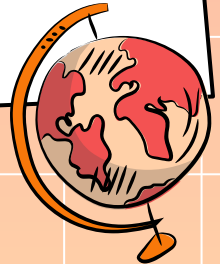


Include as much information you can.

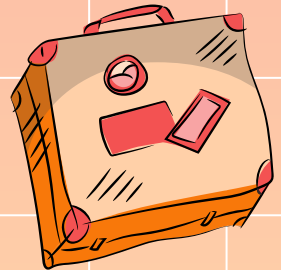
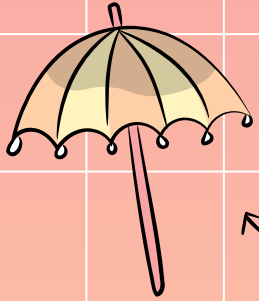
Data Table

Why should we look at data like this?

- It helps to make data a little less daunting.
- It helps us to visualize data differently.
- It helps us to see data in our daily lives.
- A fun way to express ourselves with data.



Now it is
your turn.



My Work

Area 2



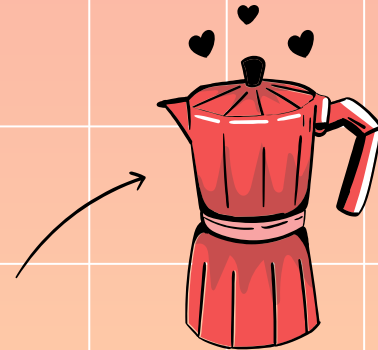
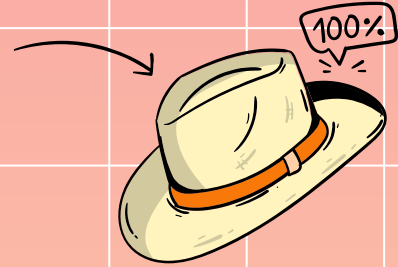
Project 2

Do you know what helps you make your point clear?

Lists like this one:

- They're simple
- You can organize your ideas clearly
- You'll never forget to buy milk!

And the most important thing: the audience won't miss the point of your presentation



Four principal concepts

Venus

Venus is the second planet from the Sun



Mars

Despite being red, Mars is a cold place

Jupiter

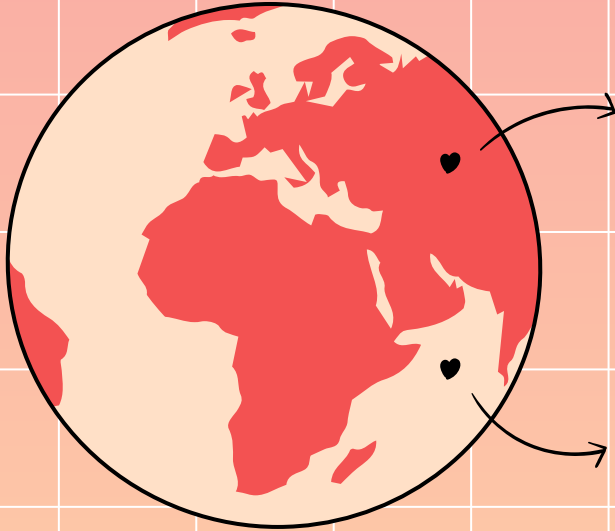
It's the biggest planet in the Solar System



Saturn

Saturn is a gas giant and has several rings

Where I've worked

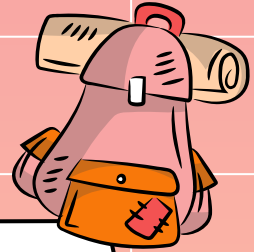


Mercury

Mercury is the closest planet to the Sun and the smallest one

Venus

Venus has a beautiful name and is the second planet from the Sun



Experience

01 → 02 → 03 → 04



2015/16

Venus has a
beautiful name

2017/18

Jupiter is the
biggest planet

2018/19

Despite being red,
Mars is cold

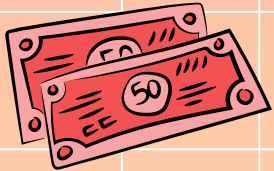
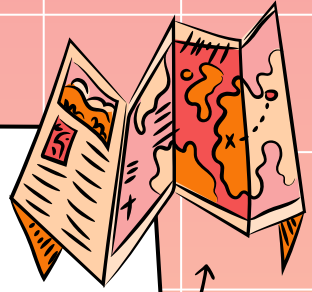
2019/20

Neptune is very far
away from us



150,000

Big numbers catch your audience's attention

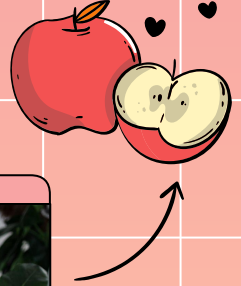


**A picture is
worth a
thousand words**



Previous projects

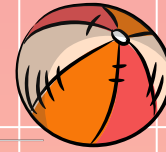
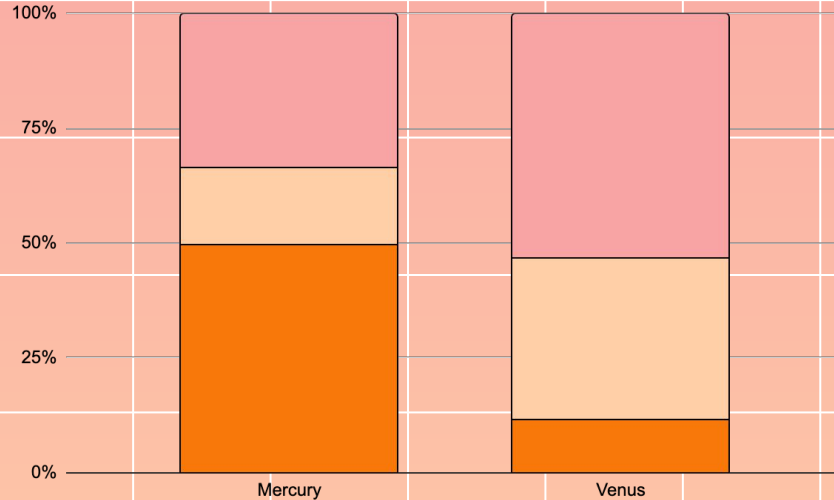
You can replace the image on the screen with your own work. Just right-click on it and select "Replace image"



Distribution of time


Mercury

Mercury is the closest planet to the Sun and the smallest one




Venus

Venus has a beautiful name, but also high temperatures

 Painting

 Composing

 Writing

Follow the link in the graph to modify its data and then paste the new one here. **For more info, click here**

contact

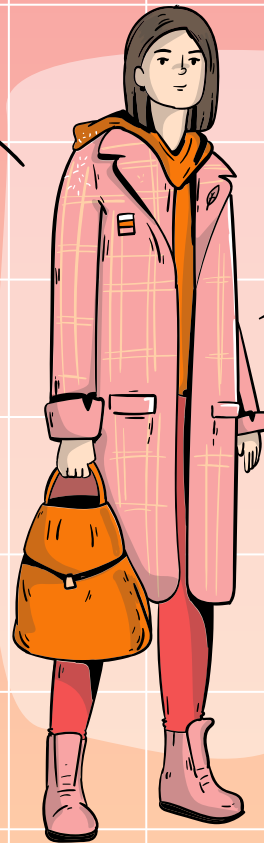
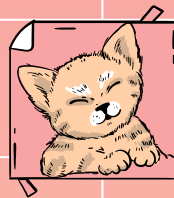
Do you have any questions?

youremail@freepik.com
+91 620 421 838
yourcompany.com



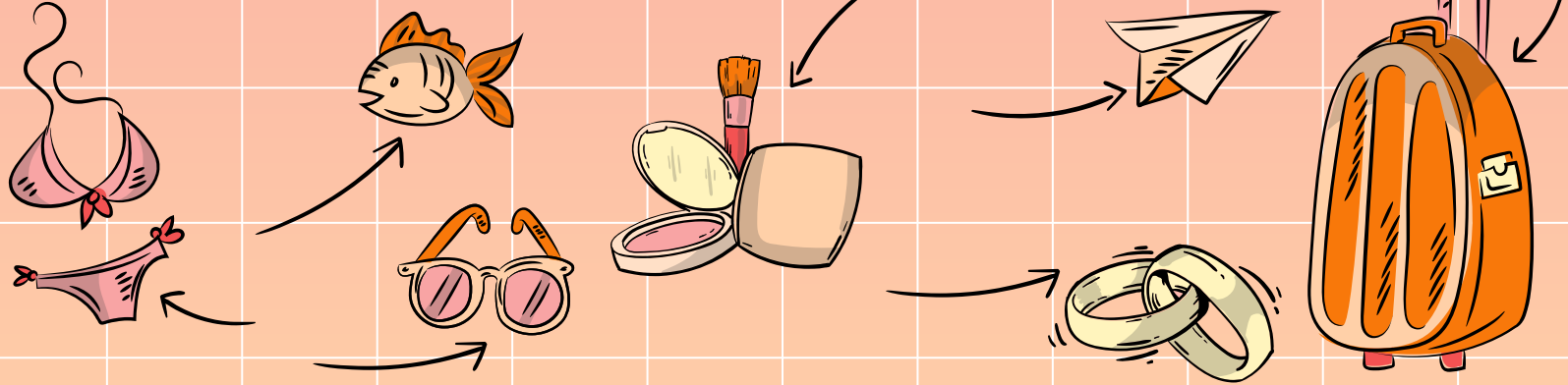
Please keep this slide for attribution

CREDITS: This presentation template was created by **Slidesgo**, including icons by **Flaticon** and infographics & images by **Freepik**



Alternative resources

You'll find here an assortment of alternative resources whose style fits that of this template



Resources

Did you like the resources on this template? Get them for free at our other websites.

Vectors

- About me concept with collection of interests and hobbies
- Hand drawn about me concept with hobbies and interests
- Hand drawn about me concept
- Hand drawn about me concept I
- Hand drawn about me concept with hobbies and interests I
- Set of travel elements in hand drawn style
- Set of travel elements in hand drawn style I

Photos

- Girl painting a canvas
- Logo designer working on her tablet connected to a laptop
- Young female logo designer working on a graphic tablet